

● Components & Specifications

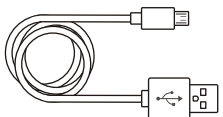


Wireless charging dock

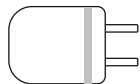
Input : DC5V, 1500mA

Transmission distance : 10 mm

Size : 81 x 150 x 9 mm



Charging cable
USB connector



Power adaptor
5V / 1A **Optional**



Wireless Charging Dock INSTRUCTION MANUAL

● Attention

The charging dock will sound a continuous tone with blue and green flashing lights to indicate the wireless controller has been placed in an incorrect position. Please adjust the controller on top of the charging dock until the tone stops and the indication light turns blue.

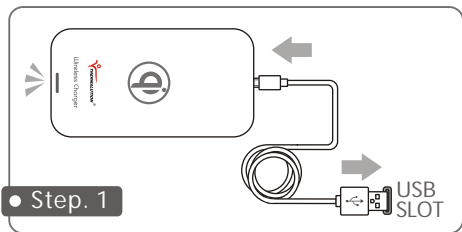
 PETATECH INTERNATIONAL CO., LTD.

Tel : +886-2-8751-9998 FAX : +886-2-8751-6887
Info@thermalution.com / www.thermalution.com



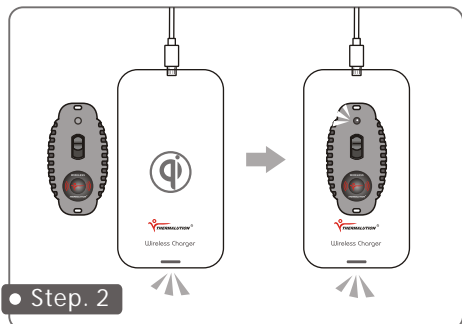
For SPE-005-F
Wireless
Controller

How to Connect the Charger :



● Step. 1

Plug the charging cable into an USB slot in the computer, or mobile phone adaptor (5V / 1A) with the other end to the charging dock. The light indication on charging dock is Green.

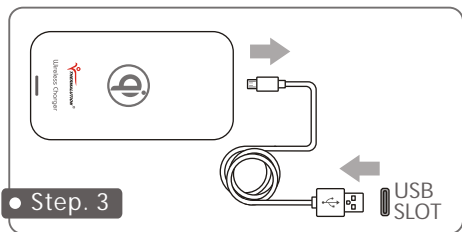


● Step. 2

Make sure that there is nothing on top of the charging dock. Place your wireless controller on top of the charging dock. A prompt tone will indicate the controller has started charging. Refer to the table below for the different colors of light of the charging devices.

	Charging	Complete
Charging dock	Blue light	Green light
Controller	Orange light	Green light

The light will turn green to indicate the controller is fully charged. Disconnect the charger cable from the charging dock, then unplug from the USB slot.



● Step. 3

Product specific safety information

Handle your device, charger and accessories with care. The following suggestions help you protect your warranty coverage:

1. Keep your device dry. If your device gets wet, allow the device to dry.
2. Do not use or store the device in dusty or dirty areas.
3. Do not store the device in high temperatures.
4. Do not store the device in cold temperatures.
5. Do not attempt to open the device.
6. Unauthorized modifications may damage the device and violate regulations governing radio devices.
7. Do not drop, knock, or shake the device.
8. Rough handling can break internal circuit boards and mechanics.
9. Keep the device surface clean.
10. Do not use mobile phone power adaptors with output voltage over 5V.



Attention !

Parts of the product are magnetic.

Metallic material may be attracted to the product. Do not place bank cards or other magnetic storage media near the product, because info stored on them may be erased.



Warning !

Manufacturers of medical devices recommend a minimum separation of 15.3 cm (6 inch) between a wireless device and an implanted medical device, such as a pacemaker or implanted cardioverter defibrillator, to avoid potential interference with the medical device.

Persons who have such devices should:

Always keep the wireless device more than 15.3 cm (6 inch) from the medical device.

Not carry the wireless device in a breast pocket.

Follow the manufacturer's directions for the implanted medical device.